

## IMPORTANT DATES 2018 - 2019

### Autumn Term 2018

Term starts: Wednesday 5<sup>th</sup> September

Half Term: Mon 29<sup>th</sup> October to Friday 2<sup>nd</sup> November

Term ends: Friday 21<sup>st</sup> December, 1.30pm

### Spring Term 2019

Term starts: Tuesday 8<sup>th</sup> January

Half Term: Monday 18<sup>th</sup> February to Fri 22<sup>nd</sup> Feb

Term Ends: Friday 12<sup>th</sup> April, 1.30pm

### Summer Term 2019

Term Starts: Tuesday 30<sup>th</sup> April

Half Term: Monday 27<sup>th</sup> May to Friday 31<sup>st</sup> May

Term Ends: Friday 19<sup>th</sup> July, 3.15pm

### Teacher Training Days

Monday 3rd September

Tuesday 4th September

Monday 7th January

Monday 29th April

Tuesday 12th July

### Learning Together Days (10am—6.30pm)

Friday 30th November 2018

Friday 5th April 2019



The Oratory R.C. Primary and Nursery  
Standards and Expectations for Learning

**Year 1**

September 2018 - July 2019



At the Oratory, we all try to follow in the footsteps of  
Blessed John Henry Newman by  
**'Shining as to be a light to others'** for Jesus!

### My Vocation

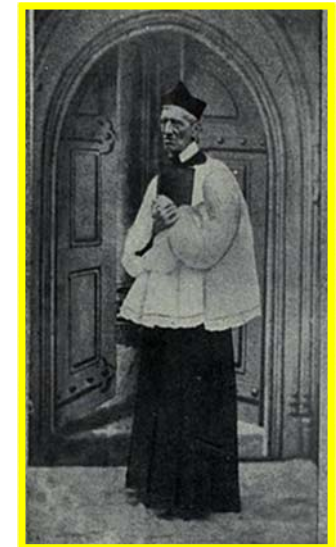
**Blessed John Henry Newman**

*God has created me to do him  
some definite service;  
he has committed some work to me  
which he has not committed to an-  
other.*

*I have my mission.*

*I am a link in a chain,  
a bond of connections  
between persons.*

*He has not created me for nothing.  
I shall do good. I shall do his work.*



**Information inside this booklet explains how  
together, we can do His work through our school  
standards and expectations!**

**Home, School and Parish working in partnership!**

## SUPPORTING CATHOLIC LIFE

Every child is a unique person created in the image and likeness of God, with a God-given potential for growth and an eternal destiny in heaven.

Adults within the Oratory school family have a special vocation to ensure our children receive the best educational experience in order to grow in love and knowledge of God, their neighbour, themselves and the created world.

***Our faith is central to everything that we do.***

**We expect parents/carers to work in partnership with the school and parish; continually supporting our Catholic Life. For example:**

- ✚ Attendance at your child's class Mass, whole school Mass and Spiritual Inspire.
- ✚ Supporting sacramental preparation: First Confession, First Holy Communion and Confirmation through attendance at the Parish Enrolment Mass, parent/carer meetings and Sunday Mass.
- ✚ Participation in key annual Parish /School celebrations and public acts of devotion including: The Crowning of Mary (May), Corpus Christi Procession and Benediction in our school grounds (June).
- ✚ Ensure your child is able to recite the prayers expected within their year group.

DATE	EVENT
Friday 9 <sup>th</sup> Nov	Y6 Class Mass, Shrine of Blessed John Henry Newman, 9.30am. All Welcome.
Friday 16 <sup>th</sup> Nov	Y5 Class Mass, Shrine of Blessed John Henry Newman, 9.30am. All Welcome.
Thursday 22 <sup>nd</sup> Nov	Y3 to Y6 Benediction, Oratory Church, 1.45 – 2.15pm Christmas Dinner Deadline no later than 22 <sup>nd</sup> Nov to return dinner slip. Christmas Dinner Cost £2.30
Thu 29 <sup>th</sup> – Fri 30 <sup>th</sup> Nov	Whole School Story Telling – Primary Books. Book Fair in hall Thurs 3.15 – 4pm and all day on Friday
Friday 30 <sup>th</sup> Nov	Learning Together Day, 10 – 6.30pm.
Sunday 2 <sup>nd</sup> Dec	First Sunday of Advent. Children to begin to collect for Reverse Advent Box.
Monday 3 <sup>rd</sup> Dec	Christmas Raffle Tickets to buy 20p a ticket or 5 for £1.
Friday 7 <sup>th</sup> Dec	Mary of the Immaculate Conception, School Patron, 9.30am Mass, Oratory Church.
Thurs 13 <sup>th</sup> Dec	Whole School Christmas Dinner
Friday 14 <sup>th</sup> Dec	Y3 and Y4 Class Mass, 9.30am Caritas Christi Carol Service, St Chad's Cathedral, Y4 Christmas Jumper Day! £1 Crisis at Christmas.
Tuesday 18 <sup>th</sup> Dec	9.30 – 10.30am Y1 Nativity ably supported by Y2 2pm 'Macbeth' performance by Y5 for Y1 – Y6. <i>KS2 will be performing a Passion Play in April 19.</i>
Weds 19 <sup>th</sup> Dec	Nursery and Reception Christmas Nativity, 10.30am. Nativities will ticket based and include a mince pie and refreshments: £1 Adult 50p Children
Thursday 20 <sup>th</sup> Dec	Y3, Y4, Y5 and Y6 to see ELF. Ticket: £20 per child. Nurs (am), Rec, Y1 and Y2 - Christmas Parties + a visit from Father Christmas! Ticket: £2 per child
Friday 21 <sup>st</sup> Dec	Whole School Mass, 9.30am. Break up for the Christmas Holidays, 1.30pm.

DATE	EVENT
Weds 26 <sup>th</sup> September	Y5 The Old Rep, Cast Workshop from 10am Parent and Carer Class Expectations and Standards Meetings: 3.30 – 4pm, 4.30 – 5pm and 5 – 5.30pm
Thur 27 <sup>th</sup> Sept	Y3 to Y6 Benediction, 1.45 – 2.15pm
Friday 28 <sup>th</sup> September	9.30am Reception Class Mass in hall accompanied by their Y5 Guardian Angels. All Welcome Y1 Botanical Garden Trip Y3 Sparkly Start – Animal in Hands Y4 Singing Playgrounds / BBC Music Day am Macmillan Coffee Afternoon, hall, 3.15 – 4.30pm
Friday 5 <sup>th</sup> October	Y3 Class Mass, Shrine of Blessed John Henry Newman, 9.30am. All Welcome.
Monday 8 <sup>th</sup> October	Caritas Christi Girls 5 aside Football Tournament, Y5 and Y6 at St Paul's School
Tuesday 9 <sup>th</sup> October	Blessed John Henry Newman Feast Day – School Patron, 9.30am Mass, Oratory Church. All Welcome.
Monday 15 <sup>th</sup> October	Caritas Christi Boys 7 aside Football Tournament, Y5 and Y6 at St Clare's
Fri 19 <sup>th</sup> Oct	Y1 and Y2 Class Mass in hall, 9.30am.
Monday 22 <sup>nd</sup> October	Y5 – Debating Skills with St Paul's – Miss Howell Whole School Assessment Week - Writing
Thursday 25 <sup>th</sup> Oct	Y5's performance of 'Macbeth' – Shakespeare in Schools Festival, The Old Rep, 7pm
Friday 26 <sup>th</sup> Oct	Nasal Flu Vaccinations Y3 to Y6 Rosary and Adoration of the Blessed Sacrament, Oratory Church, 1.45 – 2.15pm Break up for Half Term
<b>HALF TERM: Mon 29<sup>th</sup> October – Fri 2<sup>nd</sup> Nov 2018</b>	

## ROUTINES FOR YEAR 1

### Home Reading

Children are to bring their reading folder (reading book and reading record book) into school **everyday**.

### Homework

**Homework will be given out every Friday and is to be returned the following Friday.** Homework will be either based on English or Mathematics activities.

### Learning Log

Children have the opportunity to complete more open ended activities which can be completed in a variety of ways. The children have at least two tasks a term which may take up to 3 weeks to complete.

### Spellings and Dictation

**Children will have a spelling test every Friday, new spellings will also be given out on Fridays.** The spelling test will include words that children have been practising in class and also words that children should know how to spell, read and use in their writing by the end of the Y1.

### REAL Project Essential Question:

**What happens in the jungle?**

### Fabulous Finish Date: Friday 7th December

***All work is expected to be completed to a high standard in terms of content, thinking, handwriting, number and letter formation.***

## **SAFEGUARDING**

### **Attendance and Punctuality**

**Good attendance and punctuality at school are vital for:**

- ◆ your child's learning
- ◆ your child's confidence
- ◆ good progress and attainment
- ◆ establishing in your child a positive attitude towards the world of work.
- ◆ your child's social skills



### ***What is good attendance?***

In order to give a guide to your child's attendance it might be useful to consider government guidance on attendance:

**99%-100% Outstanding**

**96%-98% Good**

**95% Satisfactory**

**Under 95% Cause for concern**

**Your child's attendance should be at least 95%.**

This is the legal minimum requirement.

**Any child whose attendance falls below this will be contacted by Mrs Dickinson (HT), or Ms Sall.**

***PLEASE NOTE:* Any request to take your child out of school during term time for a holiday / visiting family overseas will NOT be authorised by the Head Teacher.**

### **School Matters!**



**Attend Today, Achieve Tomorrow**

- Income-based Jobseeker Allowance
- Support under part VI of the Immigration and Asylum Act 1999
- Child Tax Credit (provided you're not also entitled to Working Tax Credit and have an annual gross income of no more than £16,
- Working Tax Credit run-on (paid for the 4 weeks after you stop qualifying for Working Tax Credit)
- The guaranteed element of State Pension Credit Universal Credit

**Please apply on line, the Free School Meal Eligibility Checker below:**

**<https://www.cloudforedu.org.uk/ofsm/birmingham>**

**This form takes less than 5 minutes to complete, the school will be sent an email confirmation if your child is eligible.**

## **DINNER MONEY**

**Dinner money must be paid in advance on a Monday.**

Reception, Year 1 and Year 2 – free to all children.

Years 3, 4,5 and 6 - £2.30 per day.

**Don't get behind with payments – please contact the office if you need help checking to see if your child is entitled to a free school meal.**

Office staff are happy to help with any questions or queries.





## SCHOOL DINNERS

### **FREE SCHOOL MEALS**

In Reception, Y1 and Y2 your child is entitled to a Free School Meal. However in order to bring additional funding into our school budget we would ask that you read the information below to see if your child is eligible for free school meals.



If your child is entitled to free school meals the school will be sent an email confirmation. We will then be allocated additional money which will come into our annual school budget.

**If your child is in Y3, 4, 5 and 6 please check if your child is entitled to free school meals as this brings even more funding into the school.**

**If your child has moved into Year 3 in September 2018 please remember that your child's school dinner will have to be paid for unless your child is entitled to free school meals.**

If you require further assistance please talk to a member of the Office Team.

### **Re: Free School Meals Funding 2018 -2019**

You may be eligible to claim free school meals for your child, if you (or your child) get one of the following:

- Income support



Smart Uniform!  
Smart Thinking!  
Smart Learning!



## SCHOOL UNIFORM

- Burgundy sweatshirt, jumper or cardigan preferably with the Oratory School logo.
- White or yellow polo shirt .
- Grey pinafore, skirt or trousers.
- School shoes—black **(NO TRAINERS)**
- Grey / burgundy / black tights or white / grey socks
- If girls have long hair it must be tied or pinned back. Hair bands and clips are allowed if they are simple and small.  
**NO BIG BOWS .**
- Small stud earrings. **NO NAIL VARNISH.**



## PE KIT

- ✓ A plain white T-shirt, black shorts and black pumps.  
**NO FOOTBALL TOPS OR T-SHIRTS WITH LOGOS.**
- ✓ Tracksuit - blue / black for colder weather.
- ✓ Trainers outside only for sports or daily mile.
- ✓ Children in Year 5 and 6 should bring a small towel and a roll on deodorant to keep at school.



**Year 1 have PE on a Wednesday.**

## HEALTH FOR LIFE

### **Break Time Snack**

Break time snacks (£1 a week) will no longer be biscuits. Children now choose from a variety of healthier snacks:

- ◇ Breadsticks
- ◇ A small box of raisins and sultanas, raisins and apples or raisins and apricots
- ◇ Rice cakes.

Our children will continue to have sugar free juice.

**Please ensure that your child brings in their £1 in an envelope, with their full name, class and amount written clearly on the front.**

## **Daily Mile**

The Daily Mile supports your child's fitness, stamina, health and mood. Recent research shows daily physical activity has a positive impact on children's behaviour and concentration levels.

Further information can be found at <https://thedailymile.co.uk>

It is simple yet effective, enabling every child in our school to be active .  
**Key Stage 2 (Year 3 to 6)** will run on a **Monday, Wednesday and Friday** at break time.

**Key Stage 1 ( Year 1 and 2)** will run on a **Tuesday** and a **Thursday**.

**Please ensure your child has trainers on these days and wears a waterproof if its raining. We will run, jog, walk or skip in most weathers! Staff will also be joining in!**

### **PE Lessons**

To ensure our children get the maximum benefit from PE lessons we are trialling all classes having a PE lesson with 15 children in each session.

This will maximise the time the children will have to learn and practise new skills in a group of 15 rather than 30. When one half of the class does PE the other half will work on target mathematics, reading or writing skills.

